



California Faucets®

CONTEMPORARY SINGLE HOLE FLOOR MOUNT TUB FILLER WITH HANDSHOWER

**Bolsa®**

**Features**

- Available in 28 finishes including 13 PVD finishes
- All brass construction
- No additional wall or trap stabilizer kit required
- Tub filler: Maximum flow rate: 10 gpm (37 L/min) at 60 psi
- Handshower: Flow rate: 2.0 gpm (7.6 L/min) or 1.8 gpm (6.8 L/min)
- Ceramic mixing cartridge
- Handshower holder may be adjusted forward during installation
- Rough valve sold separately (9511)

**Codes/Standards Applicable**

Product meets or exceeds the following:

- ASME A112.18.1/CSA B125.1
- CEC (1.8 gpm) / DOE (2.0 & 1.8 gpm)
- Commonwealth of MA
- EPA WaterSense handshower (2.0 gpm)
- ADA compliant (with lever handles)
- Local codes may require installation of an upstream tempering valve



1211-XX.20  
1211-XX.18

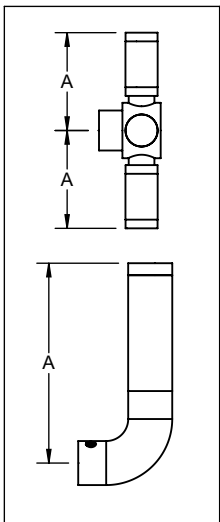
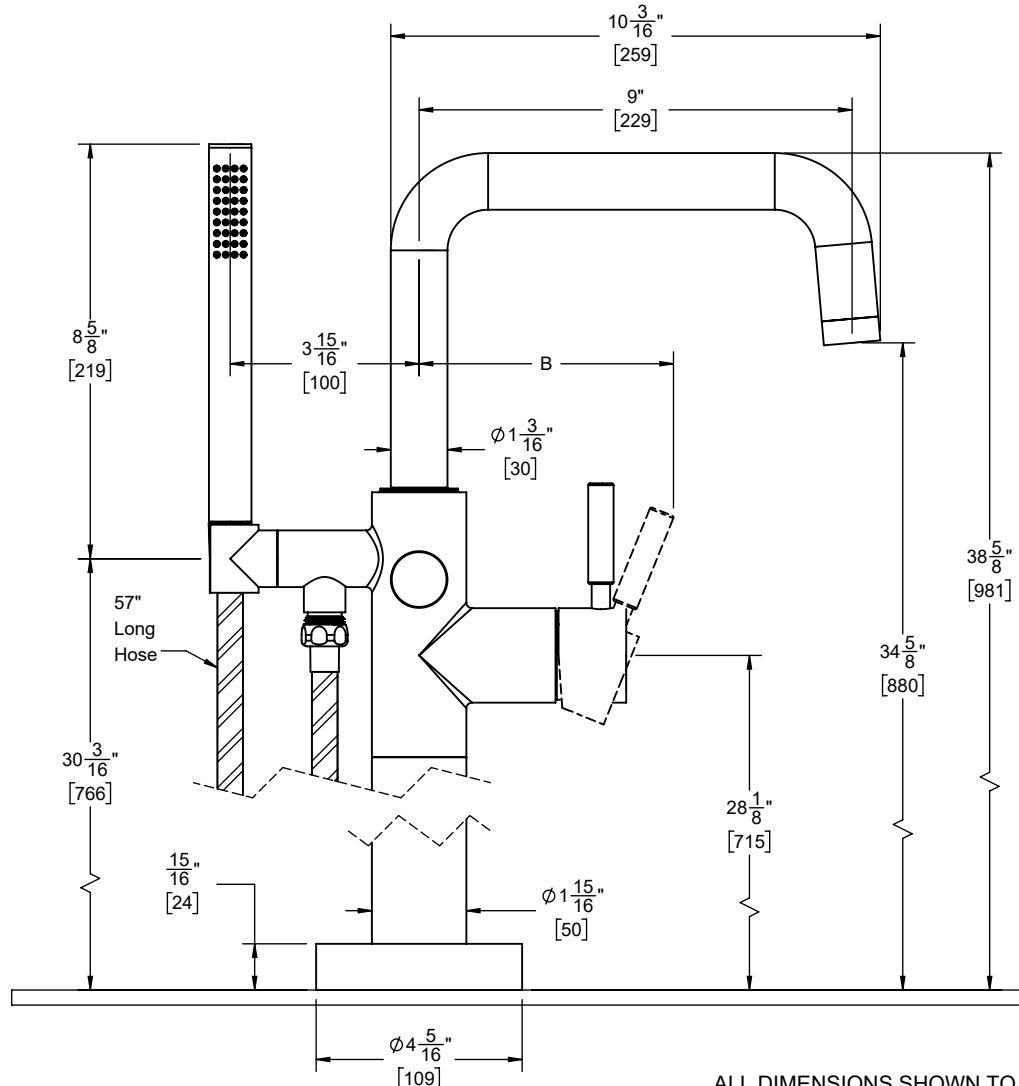


XX = DENOTES HANDLE SERIES

1211-ST.FR shown

DIMENSIONS, in.[mm]		
HANDLE OPTIONS	A	B
45	3" [76]	6 <sup>1</sup> / <sub>4</sub> " [159]
62	3 <sup>9</sup> / <sub>16</sub> " [91]	5 <sup>5</sup> / <sub>16</sub> " [135]
65	3 <sup>1</sup> / <sub>8</sub> " [36]	5 <sup>13</sup> / <sub>16</sub> " [147]
66	2 <sup>5</sup> / <sub>8</sub> " [66]	3 <sup>3</sup> / <sub>8</sub> " [102]
70	2 <sup>3</sup> / <sub>4</sub> " [70]	6" [152]
74	3" [76]	11 <sup>1</sup> / <sub>16</sub> " [170]
E3	3 <sup>15</sup> / <sub>16</sub> " [101]	11 <sup>5</sup> / <sub>16</sub> " [144]
E5	3 <sup>15</sup> / <sub>16</sub> " [100]	5 <sup>5</sup> / <sub>16</sub> " [134]

	THROUGH-HOLE SPECIFICATIONS		
	MIN	RECOMMENDED	MAX
MOUNTING FLANGE:	Ø 3-11/16" [94]	Ø 3-11/16" [94]	Ø 3-15/16" [100]



SPECIFICATIONS SUBJECT TO CHANGE WITHOUT NOTICE

ALL DIMENSIONS SHOWN TO NEAREST 1/16"  
[ALL DIMENSIONS SHOWN TO NEAREST 1MM]